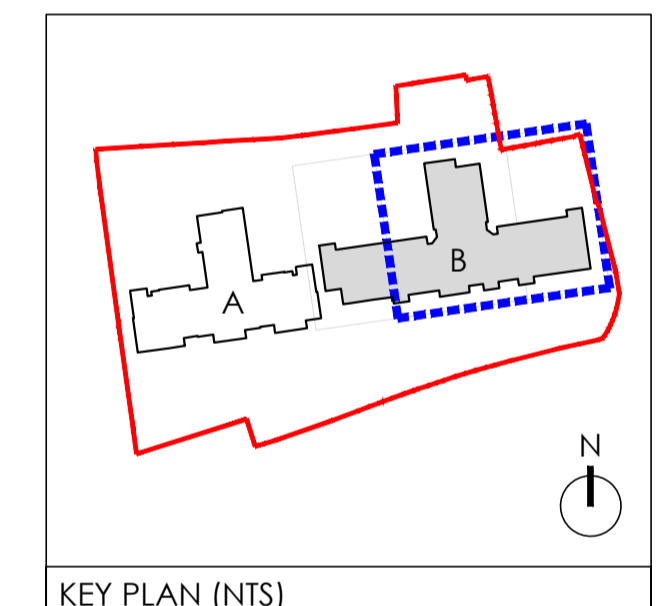


REVISIONS			
Rev.	Note	Date	By
A	Layout updated to planners comments and to suit revised elevations.	10.11.22	SGN
B	Corner unit moved forward	13.12.22	SGN



- KEY**
- 1 Bedroom Apartments
 - 2 Bedroom Apartments
 - Communal Areas
 - Ancillary/Staff Areas
 - 01 Apartment Entrance & Plot Number
 - AOV Automatic Opening Vent



CHBC Architecture
 Essex Barn 24, Little Boyton Hall Farm, Boyton Cross, Chelmsford, CM1 4LN. Telephone 01277 355007
 Suite 4, Newmarket House, Fordham Rd, Snailwell, Newmarket, CB8 7NB. Telephone 01438 663838

McCarthy Stone
Life, well lived

Project Title
 Retirement Living & Anchor
 Nazareth House, London Road
 Southend-on-Sea

Drawing Title
 Block B (Anchor)
 Ground Floor Plan (Sheet 2 of 2)

Scale 1:100@A1 Date 23.05.2022
 Drawn SGN Checked NT
 Drawing No. **LSE-2794-3-AC-1011 B**

© McCarthy & Stone Retirement Lifestyles Limited
 All rights reserved. The reproduction of all or any part of this drawing/document and/or construction of any building or part of building or structure to which this drawing/document relates without the written permission of the copyright owner is prohibited.

BLOCK B - GROUND FLOOR PLAN

ALL DIMENSIONS TO BE CHECKED ON SITE. WORK TO FIGURED DIMENSIONS ONLY. REPORT DISCREPANCIES TO THE ARCHITECT AS SOON AS POSSIBLE.